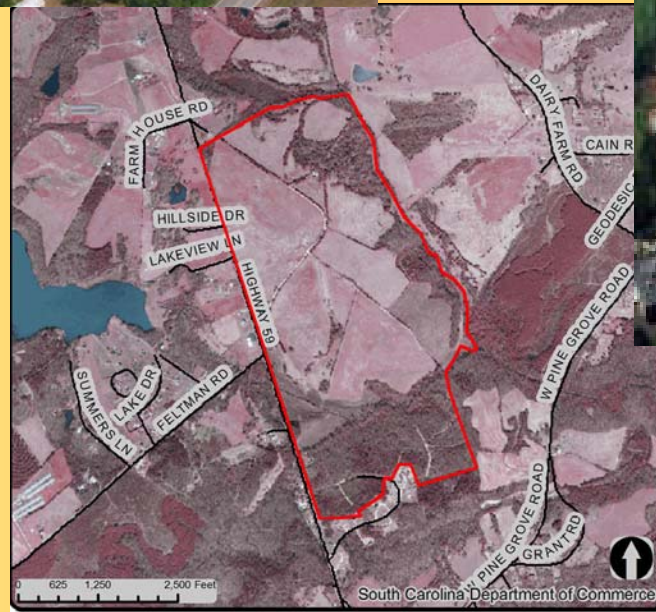


Economic Development Element



This Element Considers:

Historic trends and projections on the numbers and characteristics of the labor force, where the people who live in the community work, where the community workforce resides, available employment characteristics and trends, an economic base analysis and any other matters affecting the local economy.

Tourism, manufacturing, and revitalization efforts may also be appropriate factors to consider.



Goals

1. Complete and adopt the Infrastructure Master Plan currently being developed by the county.

Implementation Strategies:

- Adopt and Implement the Various Elements of the Infrastructure Master Plan

Goals

2. Identify, secure, and develop additional property for county-owned industrial parks in prime industrial areas.

Implementation Strategies:

- Identify, Evaluate and Prioritize Prime Industrial Areas Throughout the County
- Work with Public and Private Entities to Secure Funding for Potential Projects
- Purchase and Develop Prime Properties as Funding Becomes Available

Goals

3. Continue upgrades to the Oconee County Airport, including expansion of the runway length to 5000 feet, installation of modern aircraft instrument landing system, and construction of additional hanger space.

Implementation Strategies:

- Complete Expansion of Runway Length to 5000 Feet
- Install Modern Instrument Landing System
- Construct Additional Hanger Space as Needed
- Utilize Capital Improvements Plan to Continue to Upgrade Facility as Allowed by Budget

Goals

4. Improve communication and cooperation between county government and local municipalities; work to develop coordinated 5 and 10-year capital improvement plans.

Implementation Strategies:

- Provide Appropriate Assistance to Municipalities in Economic Development Efforts
- Partner with Municipalities to Develop Coordinated 5 and 10-year Economic Development Plans

Goals

5. Work to guarantee adequate water treatment and distribution systems for present and future economic development in Oconee County.

Implementation Strategies:

- Establish Partnership with Municipal Water Providers and Pioneer Rural Water District to Develop Mechanism Allowing Extension of Service into Unincorporated Areas of the County, and Collection of Water Revenues from these Areas.
- Extend Water Service to the I-85 Corridor to Increase Economic Development Potential for the County
- Plan for Extension of Water Service to Additional Areas of the County, including US Highway 123 and SC Highway 28 Corridors
- Identify and Establish Revenue Sources such as Special Tax Districts and Local Option Sales Taxes to Fund Water System Extension
- Assist Municipalities in Inventorying Current Condition of Their Water Infrastructure Systems to Determine Ability to Accommodate Future Growth
- Encourage Water Providers to Coordinate Efforts with Other Utility Providers in Planning for Future Growth

Goals

6. Improve and expand wastewater treatment within the county.

Implementation Strategies:

- Establish Partnership(s) with the Municipal Sewer System Providers and the Oconee County Sewer Commission to Develop Plan to Extend Service into Unincorporated Areas of the County
- Establish Partnership(s) with Oconee County Sewer Commission and Municipal Sewer Providers to Coordinate Efforts to Provide Sewer to the I-85 Corridor within 10 years; Included in this Effort will be the Construction of a Wastewater Treatment Facility Capable of Expansion to Serve Both Present and Future Needs of the Surrounding Region, Including the South Carolina Welcome Center Area, Oconee County Exits 1-4, and Areas in Anderson County that may be the Focus of Projects Developed Jointly by Oconee and Anderson Counties.
- Plan Extension of Sewer Service to Additional Areas Near Highways U.S. 123, SC 28 and the Oconee County Airport
- Establish Partnership(s) with Local, Regional, State and Federal Agencies to Find Funding Sources for Wastewater Treatment Needs- This Effort May Include Establishment of Revenue Sources Such As Special Tax Districts and Local Option Sales Taxes

Goals

7. Work to establish plans to meet the transportation needs of Oconee County for the next 30 years.

Implementation Strategies:

- Inventory All Roads and Bridges in Oconee County
- Identify High-growth Areas and the Best Way to Serve Them
- Examine Possibility of Constructing a Southern Bypass Around Seneca
- Develop Methods of Encouraging Travel Through Oconee County on Route from Atlanta, GA to Ashville, NC

Goals

8. Upgrade solid waste services in key industrial areas of Oconee County.

Implementation Strategies:

- Continue to Work to Establish a Future Regional Landfill
- Work to Develop Solid Waste Research Facility at a Regional Landfill
- Identify and Construct Additional Construction and Demolition Landfill Sites Within the County

Goals

9. Work to develop a planning process focused on establishing an efficient, equitable, and mutually compatible distribution of land uses that supports economic development while providing for future changes.

Implementation Strategies:

- Continue Support of Comprehensive Planning Process that Accurately Inventories and Analyzes Existing County Conditions
- Consideration of Countywide Zoning Process that Includes Public Education and Opportunities for a Wide Range of Public Input

Goals

10. Expand efforts to increase tourism revenues.

Implementation Strategies:

- Work with State and Federal Agencies to Access Additional Monies as Available
- Develop and Host Regionally and Nationally Promoted Sporting and Recreational Events
- Continue to Support Local Festivals, Entertainment Events, and Other Tourism Activities in Oconee County

Goals

11. Work to renew and expand local agribusiness opportunities.

Implementation Strategies:

- Work with State and Federal Agencies to Attract Agribusiness-Related Grants and Revenue Sources
- Support Efforts to Establish Pilot Programs Related to New Agricultural Methods, Technologies, and Products
- Provide Appropriate Assistance to Efforts to Expand Non-traditional And Specialty Agribusiness Opportunities

Additional Issues to Consider