

# OCONEE COUNTY PLANNING COMMISSION

415 South Pine Street - Walhalla, SC



TEL (864) 638-4218 FAX (864) 638-4168

## **LIMITED IN-PERSON ATTENDANCE PERMITTED**

*Due to the Novel Coronavirus pandemic and the ongoing state of emergency, in-person attendance at this Commission meeting by members of the general public will be limited. Attendance will be limited to twenty percent of the stated maximum occupancy, which equates to thirty-four (34) persons (including Council members, other elected officials, and staff). Attendees will be required to sit in designated seats, appropriately spaced. In-person attendance will be allowed on a “first-come” basis.*

*Additionally, to ensure the meeting otherwise remains open to the public, we will continue to broadcast it live on the County’s YouTube channel, which can be found via the County’s website at [Oconeesc.com](http://Oconeesc.com). Further, the public may call in and listen by dialing **888-475-4499 OR 877-853-5257** and entering meeting ID # **828 4377 0168**. And, individuals parked in close proximity to Council Chambers may listen to the meeting on FM 92.3.*

## **PARTISAN POLITICAL ACTIVITY PROHIBITED**

*During this election season, please remain aware that engaging in partisan political activity during a County Commission meeting is prohibited. Oconee Code of Ordinances Section 2-61. “Partisan political activities” are those activities that are directed at the success or failure of a political party, candidate for political office, or political group.*

## **Minutes**

5:00 pm- Monday, November 23, 2020

Council Chambers - Oconee County Administrative Complex

### **Members Present**

Frankie Pearson  
Mike Smith  
Gwen McPhail  
Alex Vassey  
Mike Johnson  
Stacy Lyles – Arrived 5:28pm  
Andrew Gramling

### **Staff Present**

Adam Chapman  
Vivian Kompier

### **Media Present**

None

Call to Order – Ms. McPhail called the meeting to order at 5:00pm.

1. Public Comment for Non-Agenda Items (3-minutes per person) – None
2. Presentation by Oconee Joint Regional Sewer Authority – Chris Eleazer.  
Mr. Eleazer presented the Power Point presentation that is attached.
3. Adjourn – The meeting was adjourned by unanimous vote at 6:07 pm.

Anyone wishing to submit written comments to the Planning Commission can send their comments to the Planning Department by mail or by emailing them to the email address below. Please Note: If you would like to receive a copy of the agenda via email please contact our office, or email us at [achapman@oconeesc.com](mailto:achapman@oconeesc.com).



# Oconee County Planning Commission Meeting

November 23, 2020



# OJRSA

# Brief History Lesson

**OCTOBER 28, 1971** SC Act 950 created the Oconee County Sewer Commission

**1978** Contracts signed with Seneca, Walhalla, and Westminster

**1980** Operations begin at the 5.0 MGD Coneross Creek WRF

**1996** Coneross Creek WRF expanded to 7.8 MGD

**2004–2007** *Cornelius v. Oconee County*. The S.C. Supreme Court ruled that:

1. Based on a 1976 referendum, Oconee County lacked the authority to build or operate a water system, and
2. Nothing in the referendum or circuit court order limits the county's authority to contract with public or private entities to provide sewer.

**DECEMBER 19, 2007** OJRSA created under SC Code of Law Title 6 Chapter 25 as amended by Act 59 (JOINT AUTHORITY WATER AND SEWER SYSTEMS ACT)





# The Current OJRSA

- 18\* employees
- Treat wastewater for 20,000 people at one Water Reclamation Facility
- Treatment capacity up to 7.8 million gallons per day
  - Emergency storage up to 9 million gallons
- **Conveyance System**
  - 60 miles sewer mains
  - 1,000 manholes
  - 15 pump stations
  - 3 flow monitoring stations
- Contract sewer operation for Oconee County
- Venturing into retail sewer service in Fair Play



# Sewer in the Upstate TODAY!!!

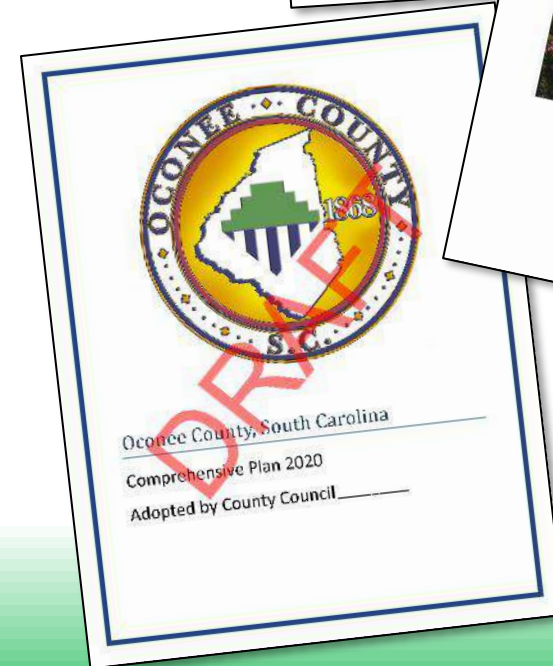
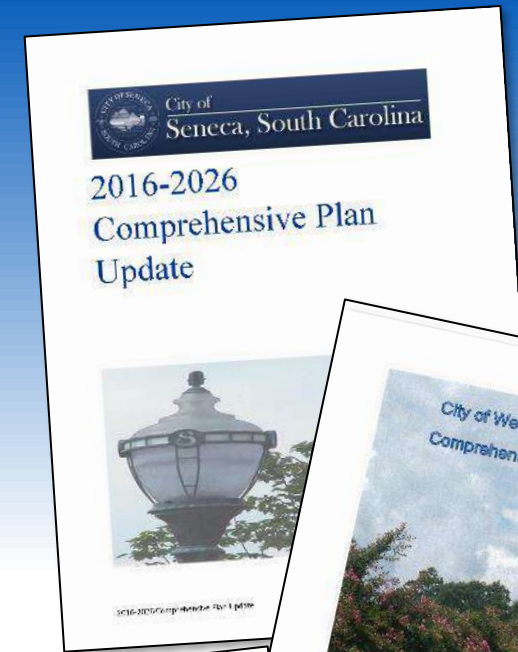
4:25 pm THIS  
afternoon...

The screenshot displays the Greenville County website's live stream interface. At the top left is the Greenville County logo. The navigation bar includes links for Departments, Careers, Popular Services, Resources, and Answer Book. A banner image of a mountain landscape features the text "LIVE STREAM". Below the banner, a welcome message reads "Welcome to Greenville County's Live Stream!". The main content area shows a Zoom meeting grid with 13 participants: Regina McCaskill, Sid Cates, Councilor Dill, Councilor Roberts, Councilor Seman, Councilor Ballard, Butch Kirven, Council Chambers, Speaker, County Attorney, Dan Tripp, Xanthe Norris, Mike Barnes, and Phyllis Henderson. A central timer shows 00:01:22 with "Pause" and "Clear" buttons. The bottom navigation bar contains "Quick Links", "Popular Services", "County Employees", and "Follow Us".



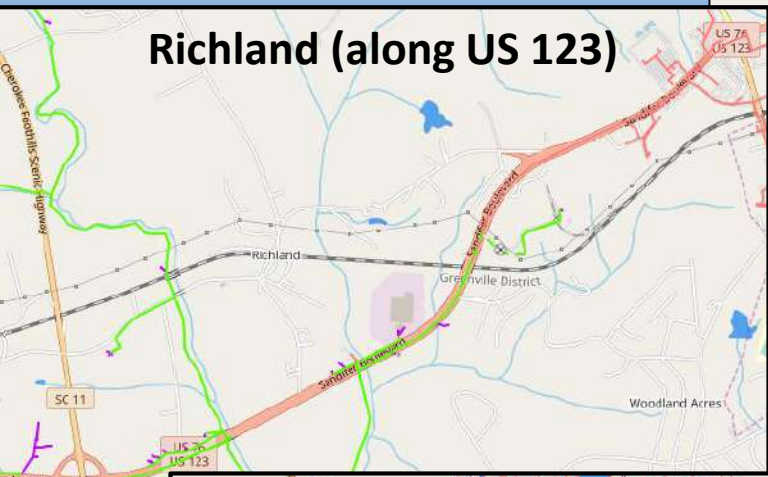
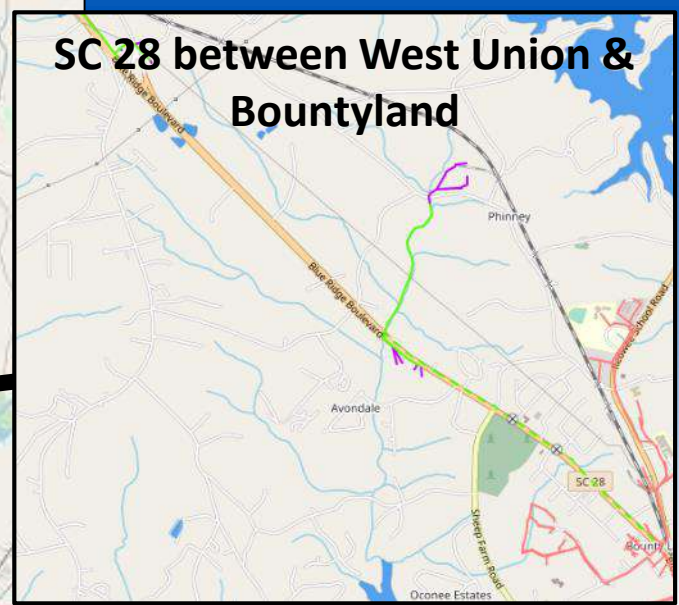
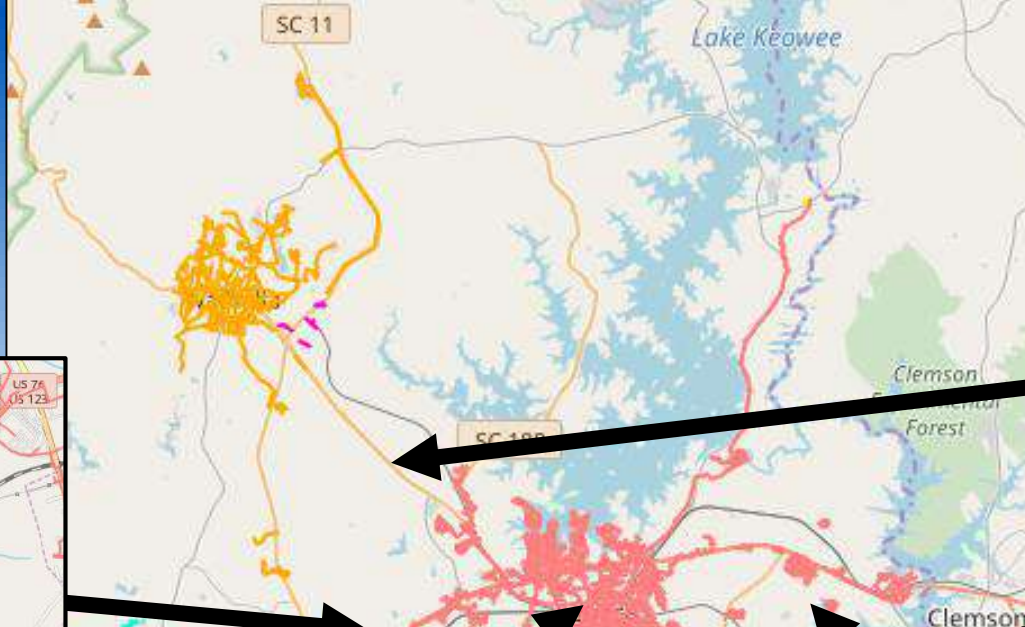
# 2019 Growth

- Permitted 176,344 gallons of additional flow (253% increase from 2018!)
  - 76 residential projects (↑ 119%)
  - 30 commercial projects (↑ 167%)
  - 3 industrial projects (↑ 300%)
- Development and interest in four primary locations in the county...





# Most frequent new sewer requests





# Sewer South



EXISTING FM TO CONEROSS WWTP

EXISTING GOLDEN CORNER COMMERCE PARK PS

EXIT 2 PS-A (1062 GPM)

EXIT 1 PS (742 GPM)

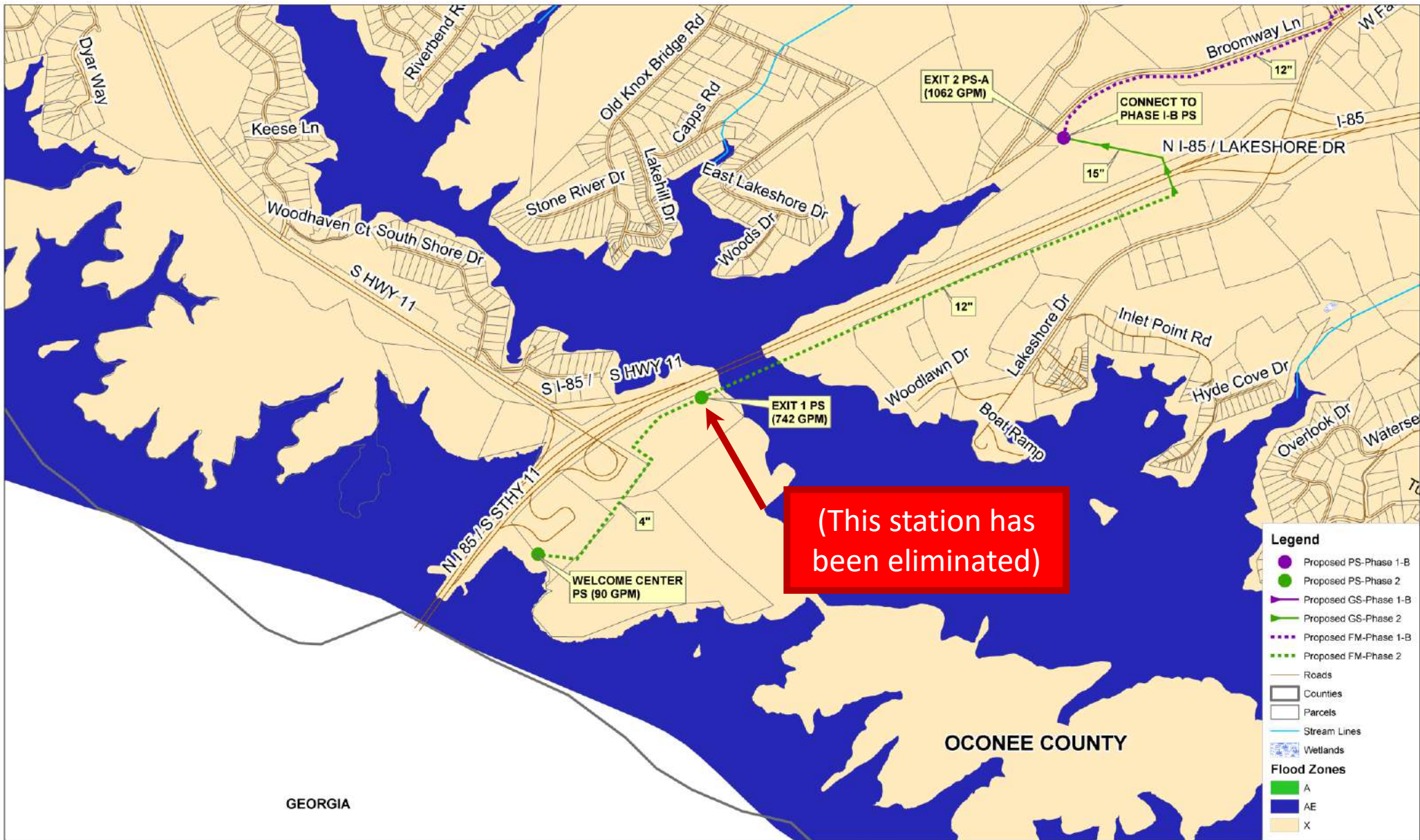
WELCOME CENTER PS (90 GPM)

### Legend

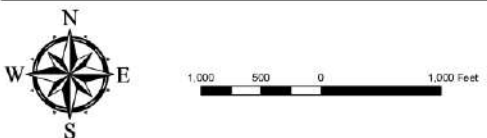
- Existing PS
- Proposed PS-Phase 1-B
- Proposed PS-Phase 2
- Proposed GS-Phase 1-A
- Proposed GS-Phase 1-B
- Proposed GS-Phase 2
- Existing FM
- Proposed FM-Phase 1-A
- Proposed FM-Phase 1-B
- Proposed FM-Phase 2
- Roads
- Counties
- Stream Lines
- Wetlands
- Parcels

ANDERSON COUNTY

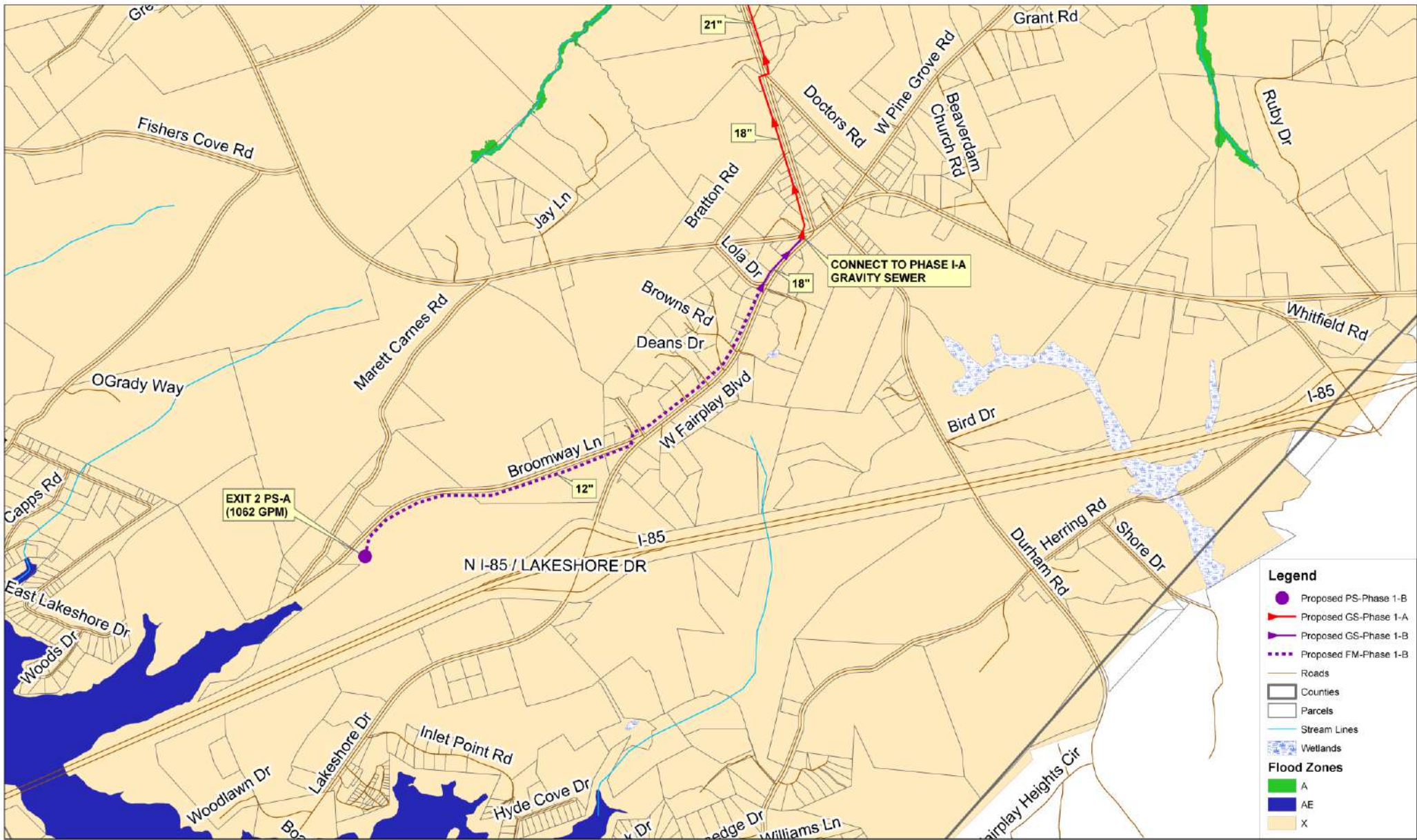




Welcome Center/Exit 1 Sewer Extension  
Phase II



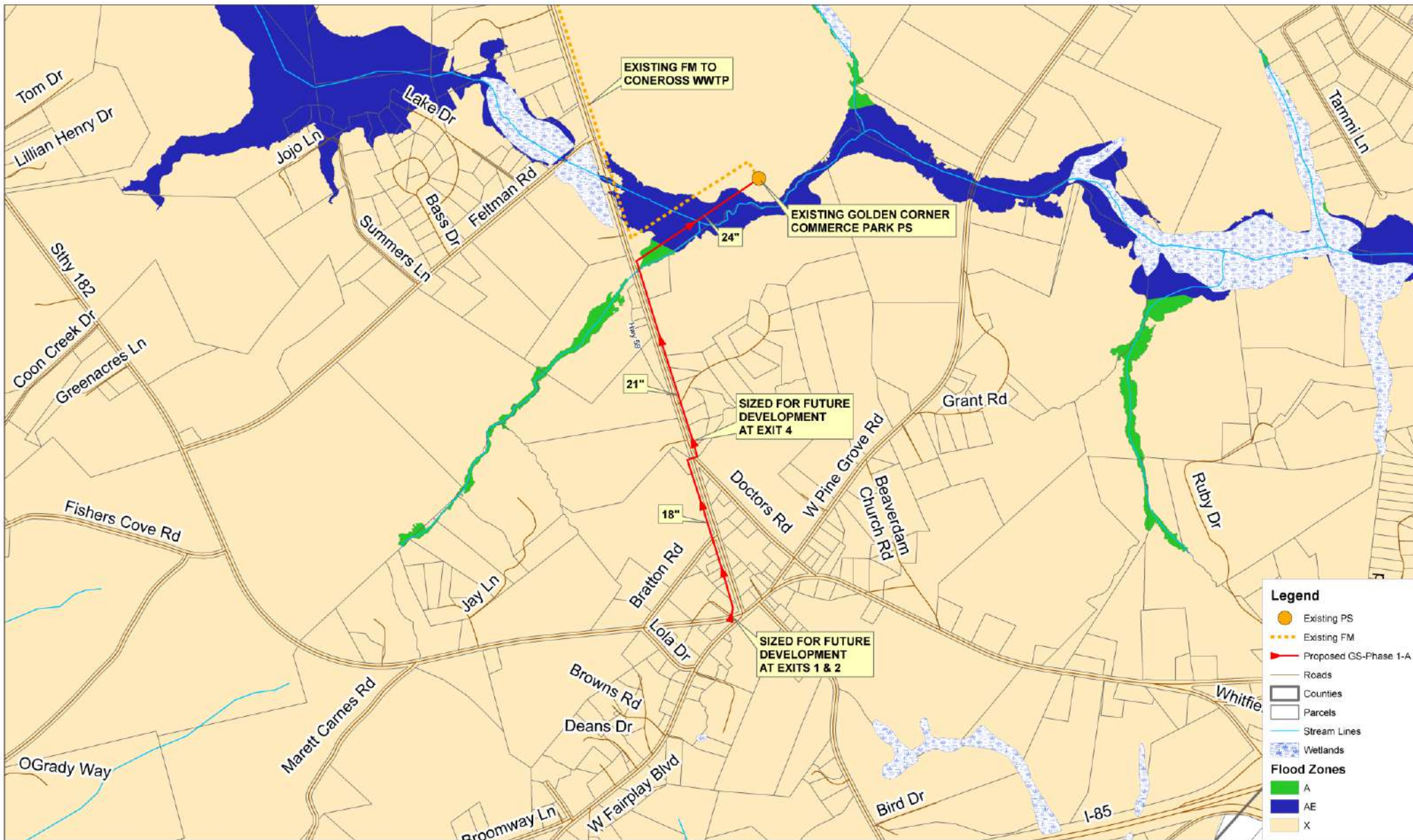




## Exit 2 Sewer Extension Phase I-B

EXHIBIT A-2  
Date: August 20, 2018  
**DAVIS & FLOYD**  
SINCE 1954



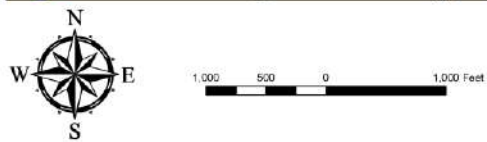


**Legend**

- Existing PS (Orange dot)
- Existing FM (Dotted orange line)
- Proposed GS-Phase 1-A (Red line)
- Roads (Thin black line)
- Counties (Thick black line)
- Parcels (Thin grey line)
- Stream Lines (Blue line)
- Wetlands (Light blue hatched)

**Flood Zones**

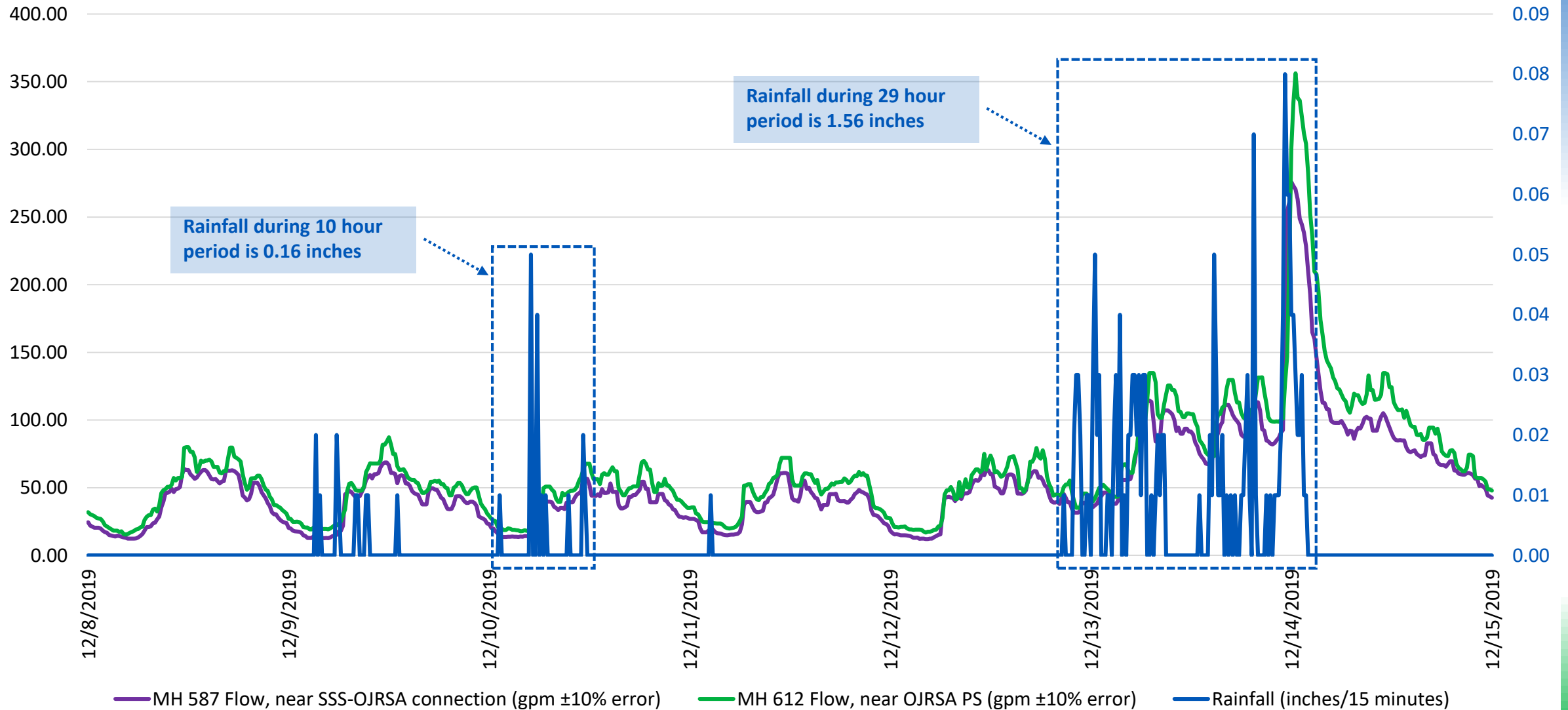
- A (Green)
- AE (Dark blue)
- X (Light blue)



## Fair Play Sewer Extension Phase I-A

# I&I Impact – An Example

Actual Flow on an OJRSA Gravity Sewer





# Schedule a Tour!

The Coneross Creek Water Reclamation Facility provides an essential service that powers our community's economic engines and improves our quality of life!

[info@ojrsa.org](mailto:info@ojrsa.org) or 864-972-3900



# Questions, Comments, and Closing



**Chris Eleazer**  
Executive Director

