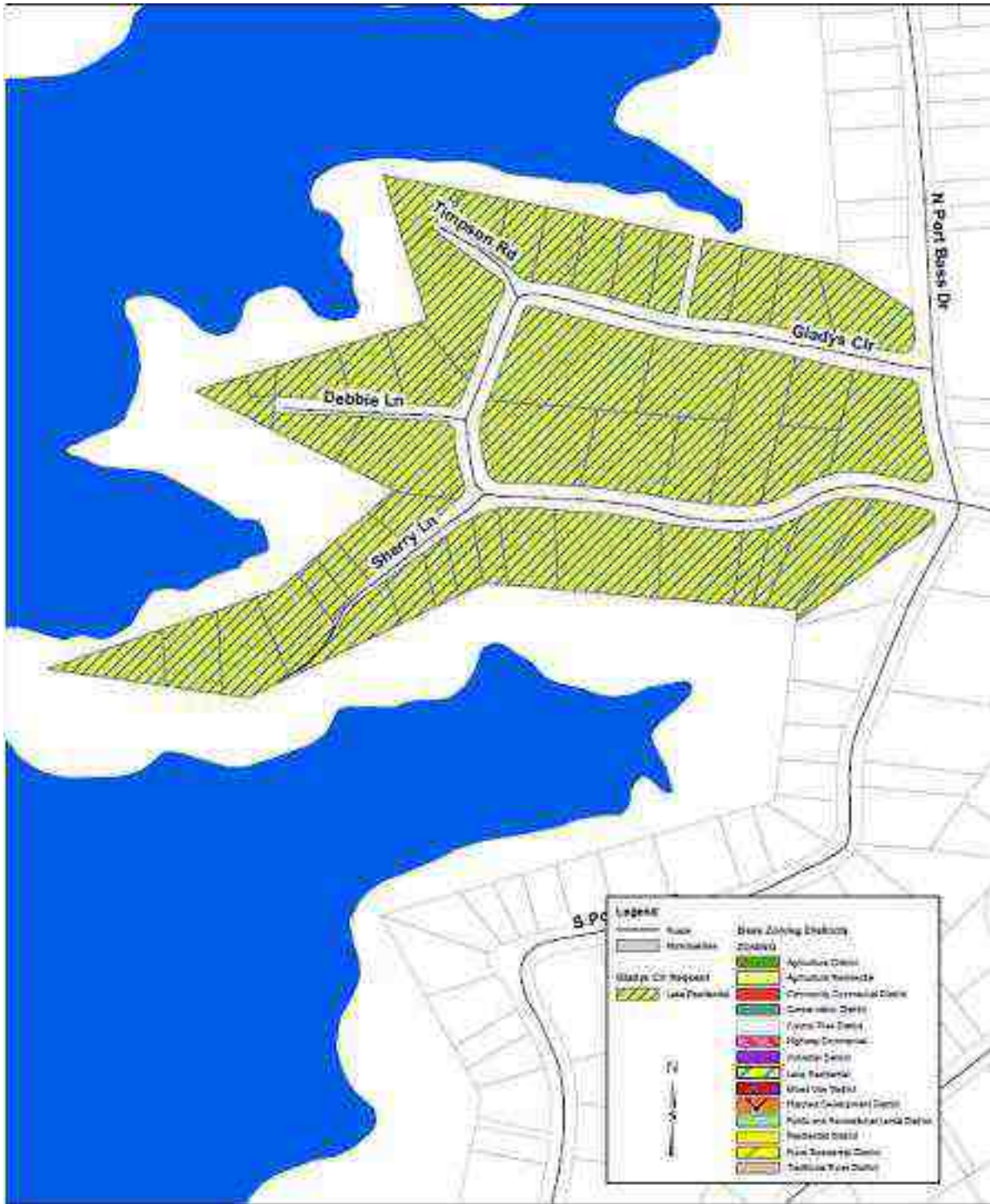


# Ordinance 2012-36

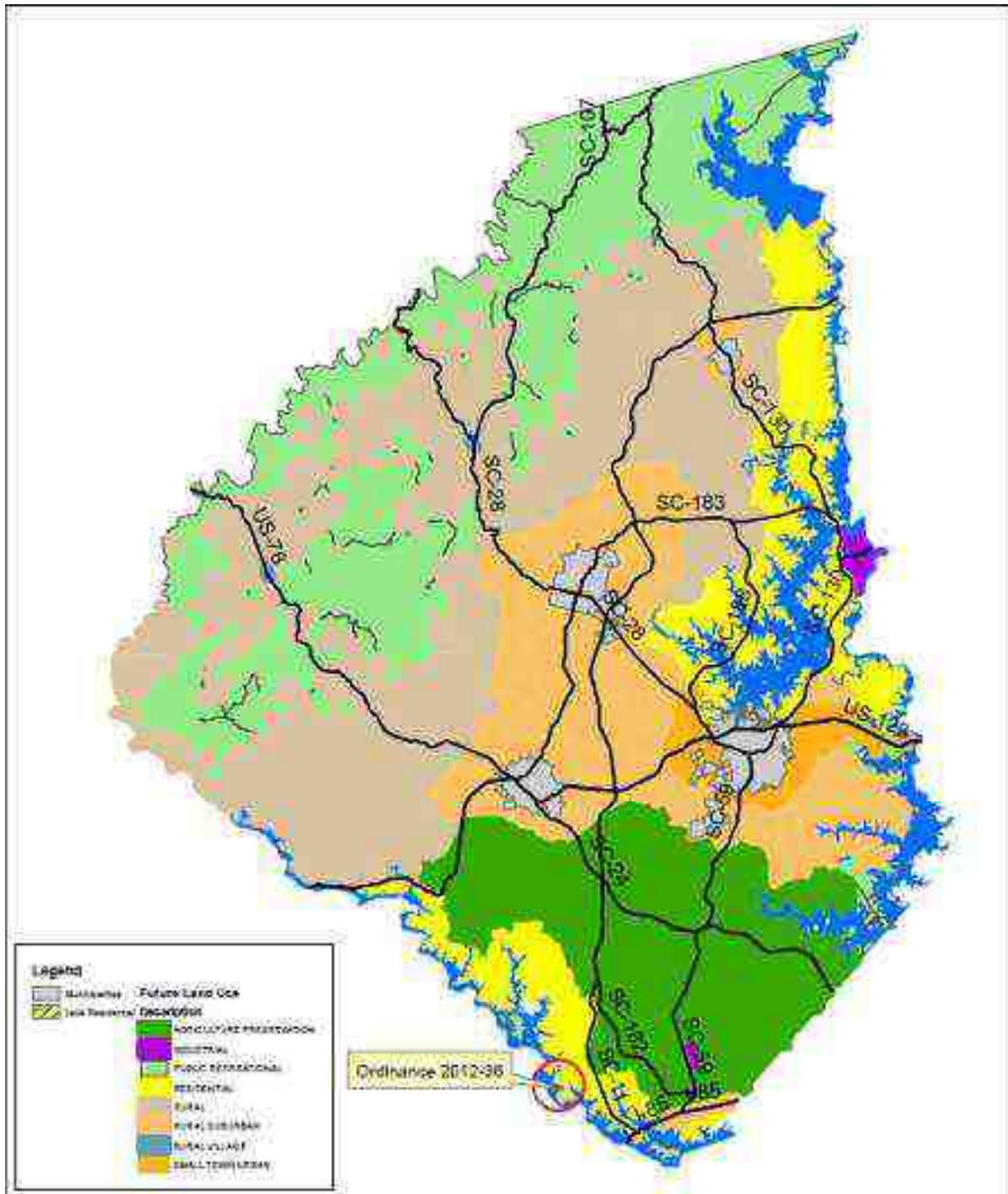
Gladys Cir. Rezoning Request

January 7, 2012  
Planning Commission  
Meeting

# Area Map



# Location on Future Land Use Map



# Background

- The proposed ordinance, 2012-36 (Gladys Cir), stems from a small area method request submitted by Mrs. Terri Perkins. The request consists of **47 parcels totaling approximately 17 acres** located along Gladys Cir, Timpson Ln, Debbie Ln, and Sherry Ln. which are located in the Port Bass subdivision.

# Public Input Received to Date

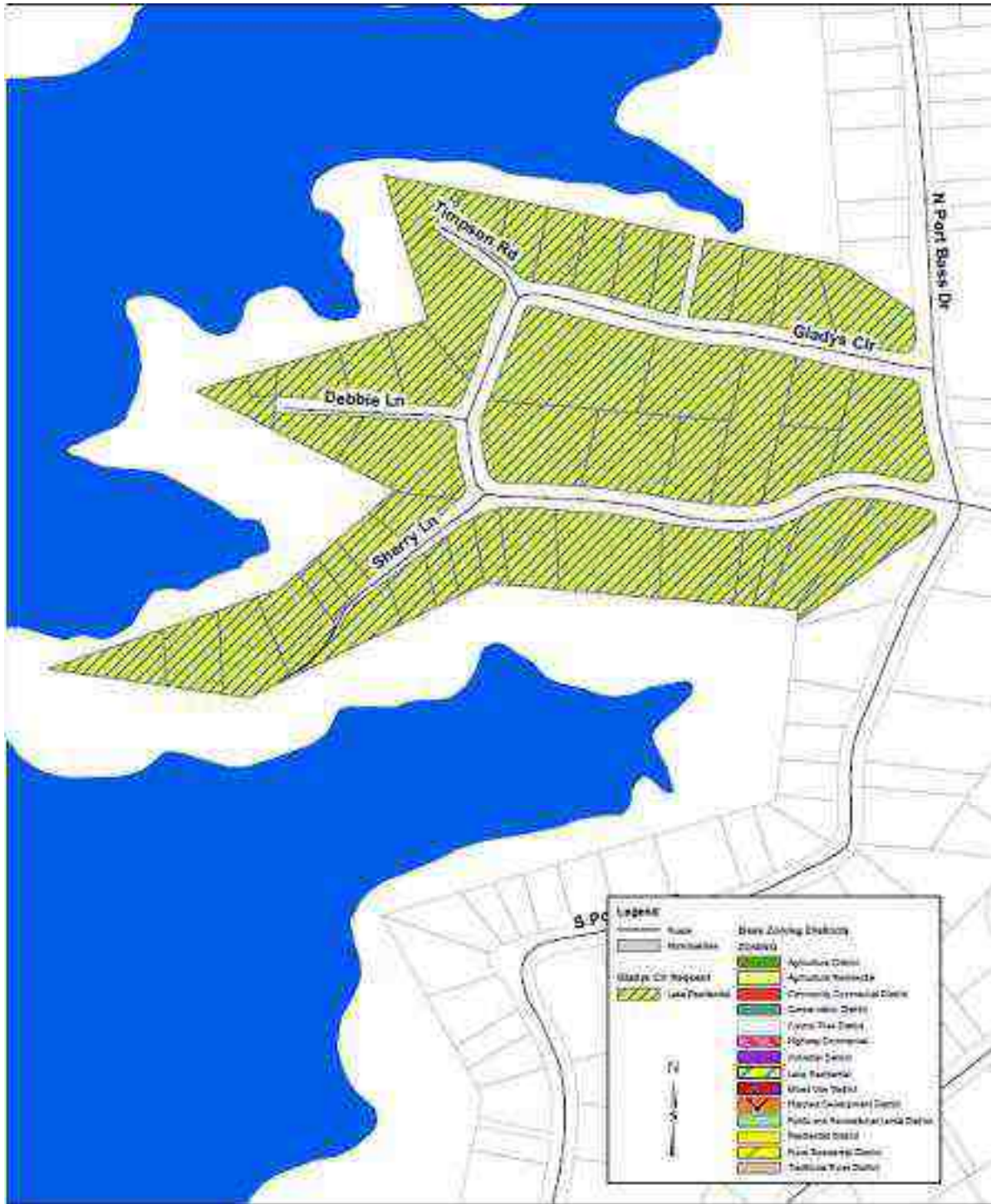
- 8-10 phone calls seeking general information and expressing support

# Staff Recommendation

- This rezoning request is located in the Residential area on the FLUM;
- The district requested complies with the Comprehensive Plan and with what Council has previously adopted in this area on the FLUM;
- The Commission should consider all public input received to date;
- Staff recommends LRD for all parcels under consideration;
- With the consensus of the Commission staff will develop other alternatives for consideration.



# Staff's Map for Consideration



# Discussion and Consideration by Commission

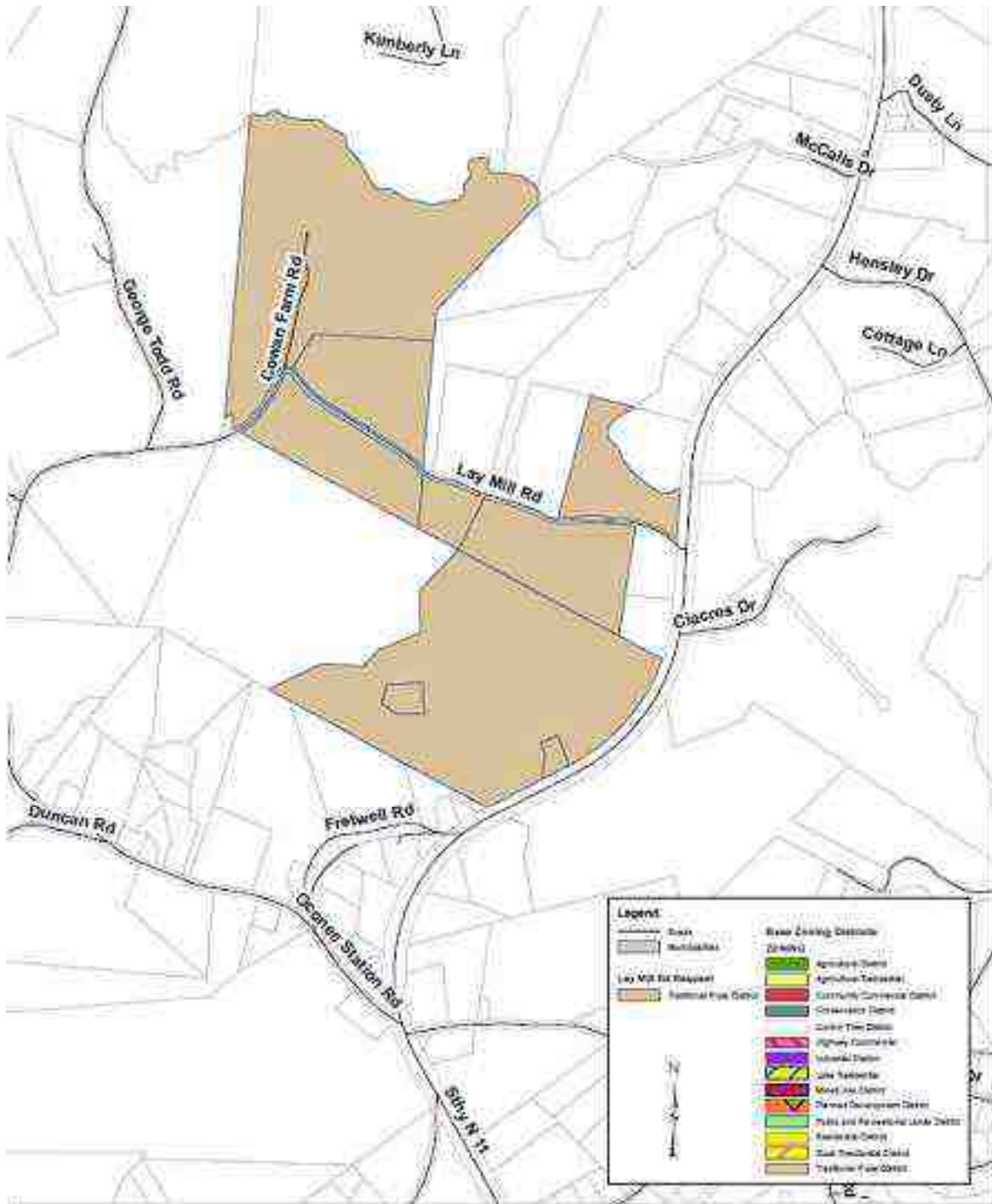


# Ordinance 2012-35

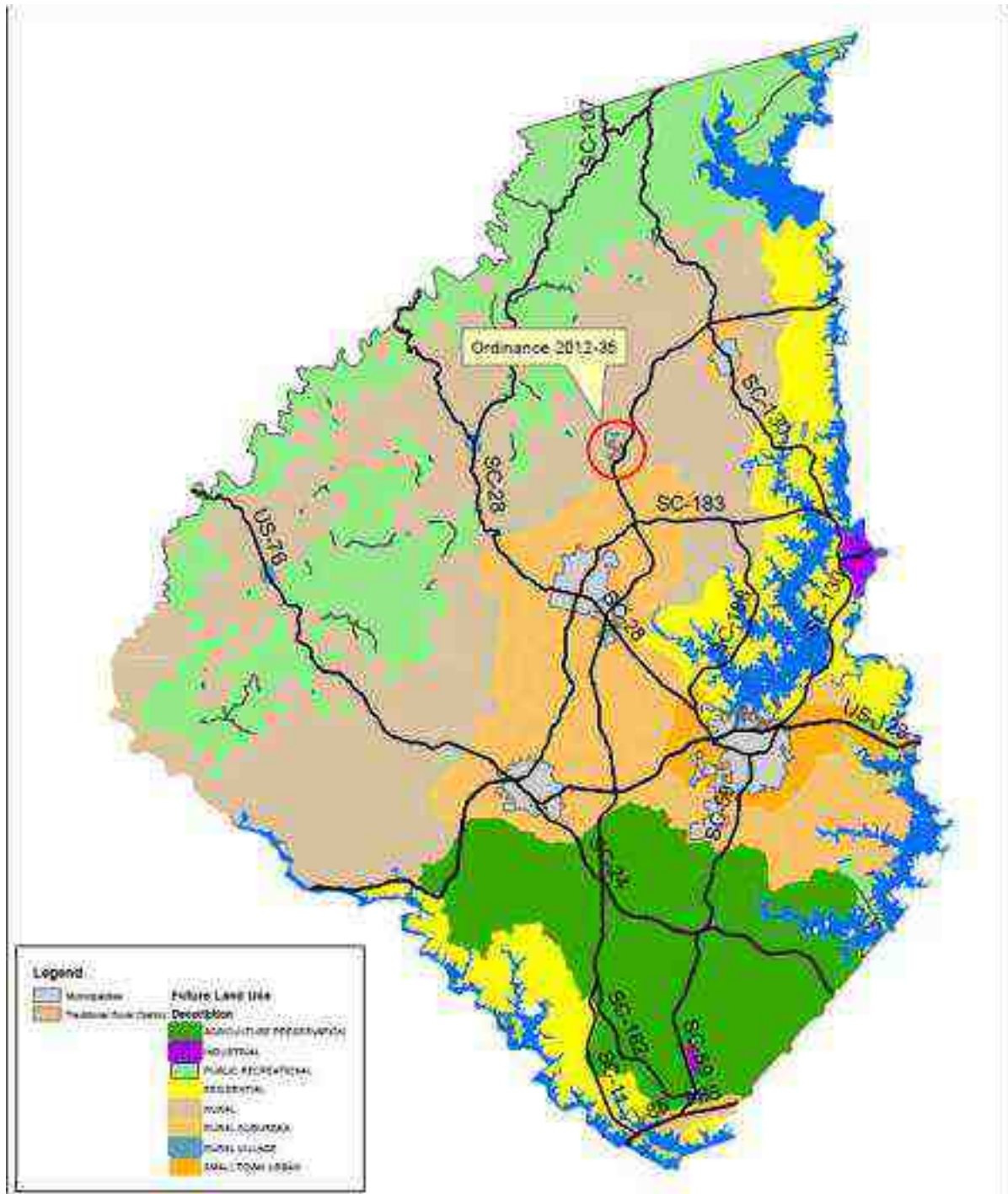
Lay Mill Rd. Rezoning Request

January 7, 2012  
Planning Commission  
Meeting

# Area Map



# Location on Future Land Use Map



# Background

- The proposed ordinance, 2012-35 (Lay Mill Rd), stems from a small area method request submitted by Mrs. Janet H. Lee. The request consists of **8 parcels totaling 228** acres in the vicinity of the intersection of Lay Mill Rd. and Hwy 11 in the Salem area.

# Public Input Received to Date

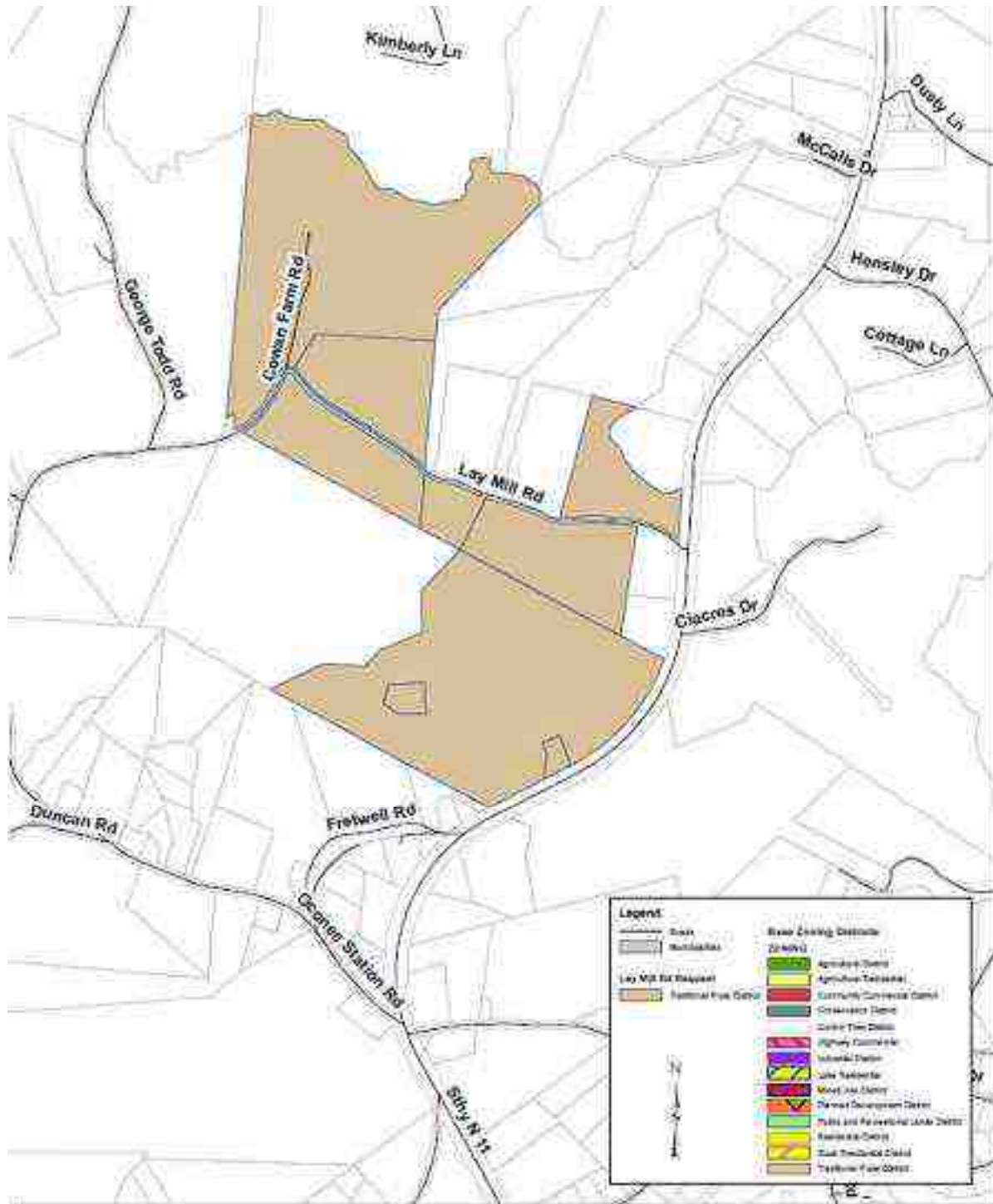
- None to date.

# Staff Recommendation

- This rezoning request is located in the Rural area on the FLUM;
- The district requested complies with the Comprehensive Plan and with what Council has previously adopted in this area on the FLUM;
- The Commission should consider all public input received to date;
- Staff recommends TRD for all parcels under consideration;
- With the consensus of the Commission staff will develop other alternatives for consideration.



# Staff's Map for Consideration



# Discussion and Consideration by Commission



# Oconee County Planning Department

415 S. Pine Street, Walhalla, SC 29691

Telephone: 864-638-4218

Fax: 864-638-4168

---

Date: January 7, 2013

To: Members of County Council

From: Chairman Ryan Honea

Re: Planning Commission Recommendation concerning At-Large Seat

---

The Planning Commission held a meeting on Monday, January 7, 2013 to discuss a recommendation concerning the open At-Large seat, currently filled by Mr. David Lyle, as outlined in Ch. 32 Section 4 of Oconee County's Code of Ordinances. The Planning Commission voted unanimously to recommend that Mr. Lyle be reappointed for a second term on the Planning Commission. Mr. Lyle expressed that it has been a pleasure to serve the citizens of Oconee County, and he would be honored to continue his service for another term.

Josh Stephens



























### Scenic Highway Corridor Plan:

- (a) A detailed description of the section of the road or highway to be designated, including two or more of the intrinsic qualities as defined in this Ordinance.

The section of highway we would like to have designated as an Oconee County Scenic Highway is the approximately one mile stretch of road beginning at the intersection of Bounty Land Road and Sheep Farm Road and ending at the junction of Highway 28.

- (b) A marked map clearly indicating the section of the road or highway the applicant is proposing for designation.

Please see attachment.

- (c) Photographs or videos of areas which the applicant considers to be of intrinsic value or significance.

Please see attachments.

- (d) Letters of support from citizens, businesses, civic groups and other organizations.

Please see attachments.

- (e) A maintenance plan outlining litter collection responsibilities.

A group from "The Newcomers", members of the Adopt A Highway Program has agreed to schedule litter pick-up three times a year. They currently pick up trash on the existing Sheep Farm Road and have done a commendable job. We can also contact our Litter Control Officer, John McGuffin, and request he have inmates pick up if we find that three times a year is insufficient.

Re: Adopt a Highway - Sheep Farm Road  
From: "tddoyle@bellsouth.net"  
<tddoyle@bellsouth.net>  
To: HENRY L KLAREN <klarenh@bellsouth.net>

---

Yes, we will do it.

--- On Fri, 10/12/12, HENRY L KLAREN <klarenh@bellsouth.net> wrote:

From: HENRY L. KLAREN <klarenh@bellsouth.net>  
Subject: Adopt a Highway - Sheep Farm Road  
To: tddoyle@bellsouth.net  
Date: Friday, October 12, 2012, 12:05 PM

Hello Denise,

My name is Jeri Klaren. I am on the board of KOBA as well as on the Oconee County Scenic Highway Committee. The reason for contacting you is to find out if your group, "The Newcomers", plan on picking up the new part of Sheep Farm Road. It is approximately 1 mile long as is the part you are now doing. That would make a total of 2 miles which is the normal distance for an adoption. We on the OSHC are trying to get the new part of the road designated as a Scenic Highway and in order to do this, we have to submit the name of one or more groups that intend to clean up that portion of road at least three times a year. Could we count on your group to commit to this?

I'm sure you are as concerned with the beauty of our county as we are. Otherwise you would not have adopted the portion of road that you did. Thank you in advance for considering our proposal and if you could let me know of your decision by the end of the month it would be greatly appreciated.

Sincerely,  
Jeri Klaren  
KOBA Representative for  
Oconee County Scenic Highway Committee  
klarenh@bellsouth.net

Concerned Citizens for Conservation

CCC

PO Box 309  
Walhalla, S.C. 29691

October 2, 2012

Scenic Highway Committee  
955 Park Street  
PO Box 191  
Columbia, SC 29202

Dear Committee Members:

We respectfully request that the approximately one mile stretch of the new portion of Sheep Farm Road, beginning at the intersection of Sheep Farm Road and Bounty Land Road and ending at Highway 28, be designated as a Scenic Highway. The beauty of this section of road is evidenced by the photos submitted. We would like to keep it beautiful, clean, and just one more reason for visitors to come here.

Thank you for your consideration



Concerned Citizens for Conservation





# South Carolina Lions District 32-A

Upstate SC

Scenic Highway Committee  
955 Park Street  
PO Box 191  
Columbia, SC 29202

To Whom It May Concern:

The Walhalla Lions Club asks that the new portion of Sheep Farm Road from Bounty Land Road to Hwy 28 be designated as a Scenic Highway. It is the belief of this organization that it could only benefit Oconee County to do so. The more pristine we can keep our county, the better off we will be to attract new businesses as well as visitors.

Glenn Buddin  
President  
Walhalla Lions Club



**CITY OF SENECA**  
P.O. Box 4773  
221 East North First Street  
Seneca, South Carolina 29679  
(864)885-2700 Fax: (864)885-2701  
www.Seneca.SC.US

**Gregory P. Dieterick**  
Administrator

September 26, 2012

Scenic Highways Committee  
955 Park Street  
PO Box 191  
Columbia, SC 29202

Dear Committee Members:

The City of Seneca supports the effort of the Concerned Citizens for Conservation to Create a Scenic Highway in Oconee County beginning at the intersection of Bountyland Road and Sheep Farm Road ending at Highway 28.

The City of Seneca wants to continue promoting tourism by showcasing the majestic view of the Blue Ridge Mountains on this stretch of road leading into Walhalla and on up the mountain to our State Park and other attractions. Oconee State Park continues to attract in excess of 60,000 visitors a year.

Thank you for your efforts.

Sincerely,

Greg Dieterick  
City Administrator



## SCHOOL DISTRICT OF OCONEE COUNTY

414 South Pine Street, Walhalla, South Carolina 29691

Phone: 864.886.4400 • Facsimile: 864.886.4408

[www.oconee.k12.sc.us](http://www.oconee.k12.sc.us)

September 19, 2012

SC Scenic Highway Committee

955 Park Street

PO Box 191

Columbia, SC 29202

Dear Sir/Madam:

At their regularly scheduled meeting on November 13, 2007, the Board of Trustees for the School district of Oconee County voted to support the designation of an additional scenic highway route in Oconee County. The School Board of Trustees continues to support the designation of a new portion of road that intersects at Bountyland Road and Sheep Farm Road as a Scenic Highway.

The School Board asks for your consideration of this request, and the Board believes such a designation will assist in maintaining the beauty of our community.

Sincerely,

Mike Lucas, Ed.D.  
Superintendent

BLUE HILLS GARDEN CLUB

Walhalla, SC

Blue Hills Garden Club  
c/o 101 W. Wesley Street  
Walhalla, SC 29691  
September 26, 2012

Scenic Highways Committee  
955 Park Street  
PO Box 191  
Columbia, SC 29202

Dear Committee Members:

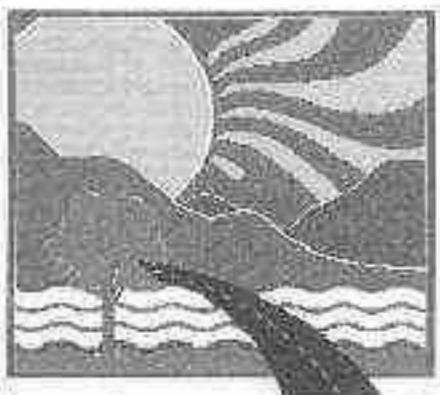
The Blue Hills Garden Club of Walhalla has a long history of supporting efforts to beautify our town and our local highways. We applaud the efforts of the Concerned Citizens for Conservation to create a Scenic Highway in Oconee County from the intersection of Bounty Land Road and Sheep Farm Road and ending at Highway 28. The view from this road leading into Walhalla and on up to the Blue Ridge Mountains is a definite advantage in promoting tourism to this area. We offer our support and encouragement to the designation of this new road as a SC Scenic Highway.

Thank you for your consideration,



The Blue Hills Garden Club of Walhalla  
Martha Hedden Murtiashaw  
Club president, 2012-2013

cc: Oconee County Council



**Keep Oconee Beautiful  
Association**

**P.O. Box 1491  
Seneca, SC 29679  
(864) 638 - 5889**

Scenic Highways Committee  
955 Park Street  
P.O. Box 191  
Columbia, SC 29202

September 11, 2012

Dear Committee Members,

The purpose of this communication is to provide support from Keep Oconee Beautiful Association (KOBA) for the request to designate the approximately one mile stretch of Road, beginning at the intersection of Bountyland Road and ending at Highway 28, known as Sheep Farm Road.

KOBA's mission is to restore and maintain the beauty of Oconee County through education, awareness, cooperation and action. KOBA has been assisting in the beautification of Oconee County for over twenty years and is an affiliate in good standing of Keep America Beautiful. KOBA administers the county Adopt-A-Highway program, conducts anti-litter and recycling programs in Oconee County schools, holds an annual Earth Day and Great American Cleanup plus other opportunities promoting beautification.

Approving this request will help preserve the existing beauty of this section of highway and the gateway to the Blue Ridge Mountains.

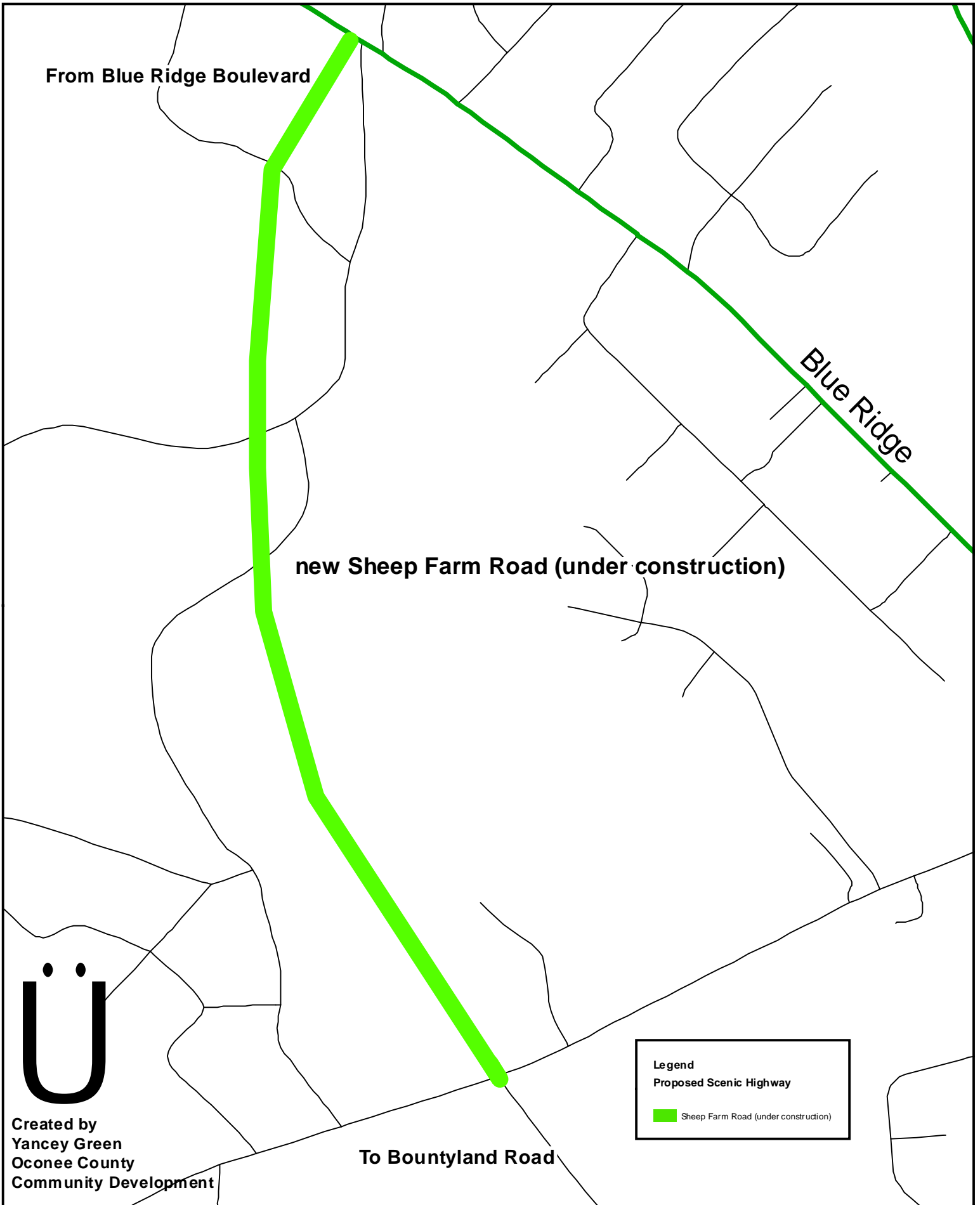
Thank you for your consideration,

A handwritten signature in cursive script that reads "Fred Bailine".

Fred Bailine, Chairperson  
Keep Oconee Beautiful Association

cc: Oconee County Council

**Proposed Scenic Highway designation for Sheep Farm Road**

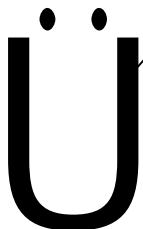


**From Blue Ridge Boulevard**

**new Sheep Farm Road (under construction)**


**Blue Ridge**

**To Bountyland Road**



**Created by  
Yancey Green  
Oconee County  
Community Development**

**Legend**  
**Proposed Scenic Highway**

 Sheep Farm Road (under construction)