

Ordinance 2012-12

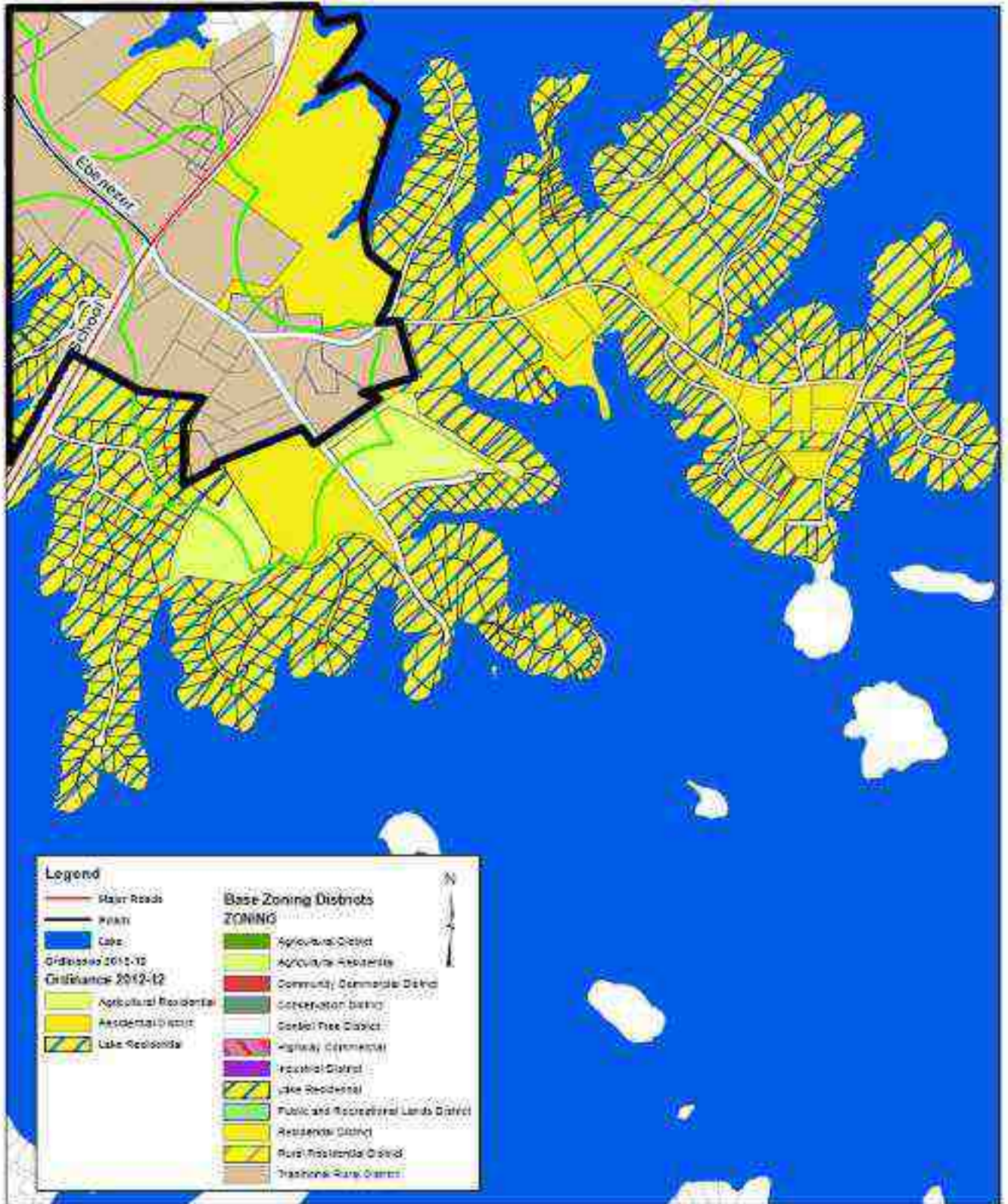
Biggerstaff Area Rezoning
Request

June 4, 2012
Planning Commission Meeting

Public Input Since Last Meeting

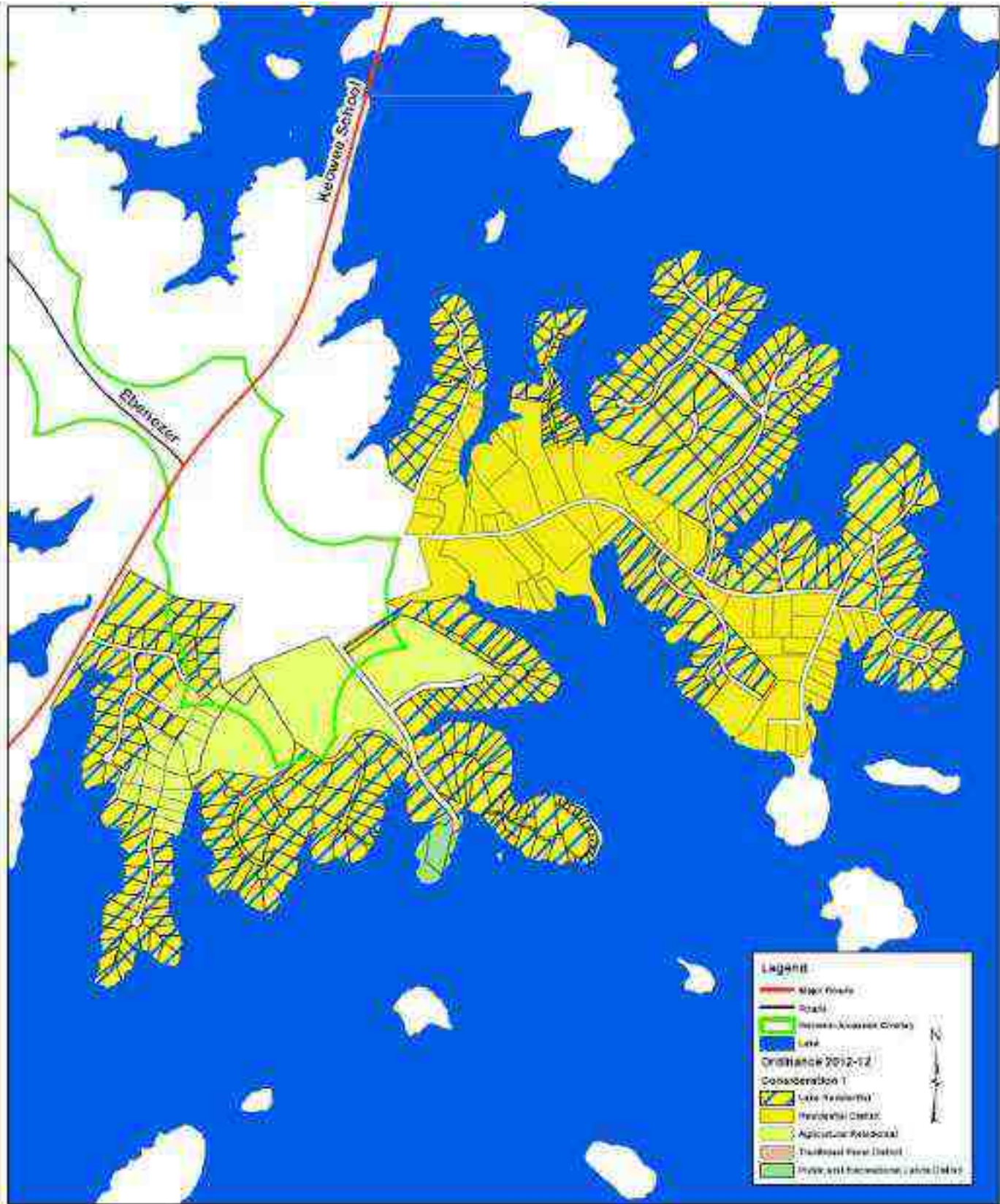
- Public Input has remained the same ranging from support to opposition to being included in the rezoning

Map as Petitioned



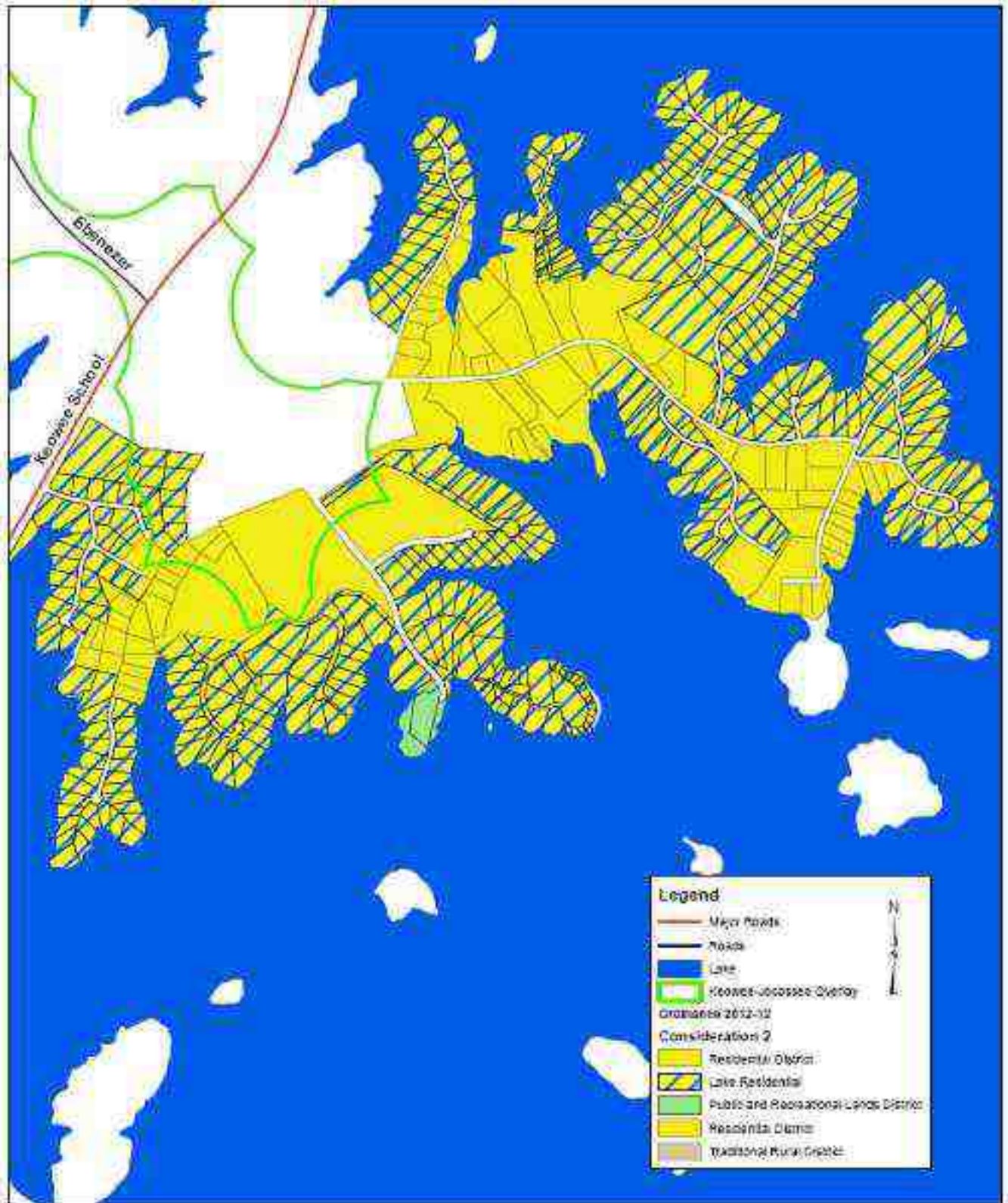
Staff's Map for Consideration

presented on 4-2-2012



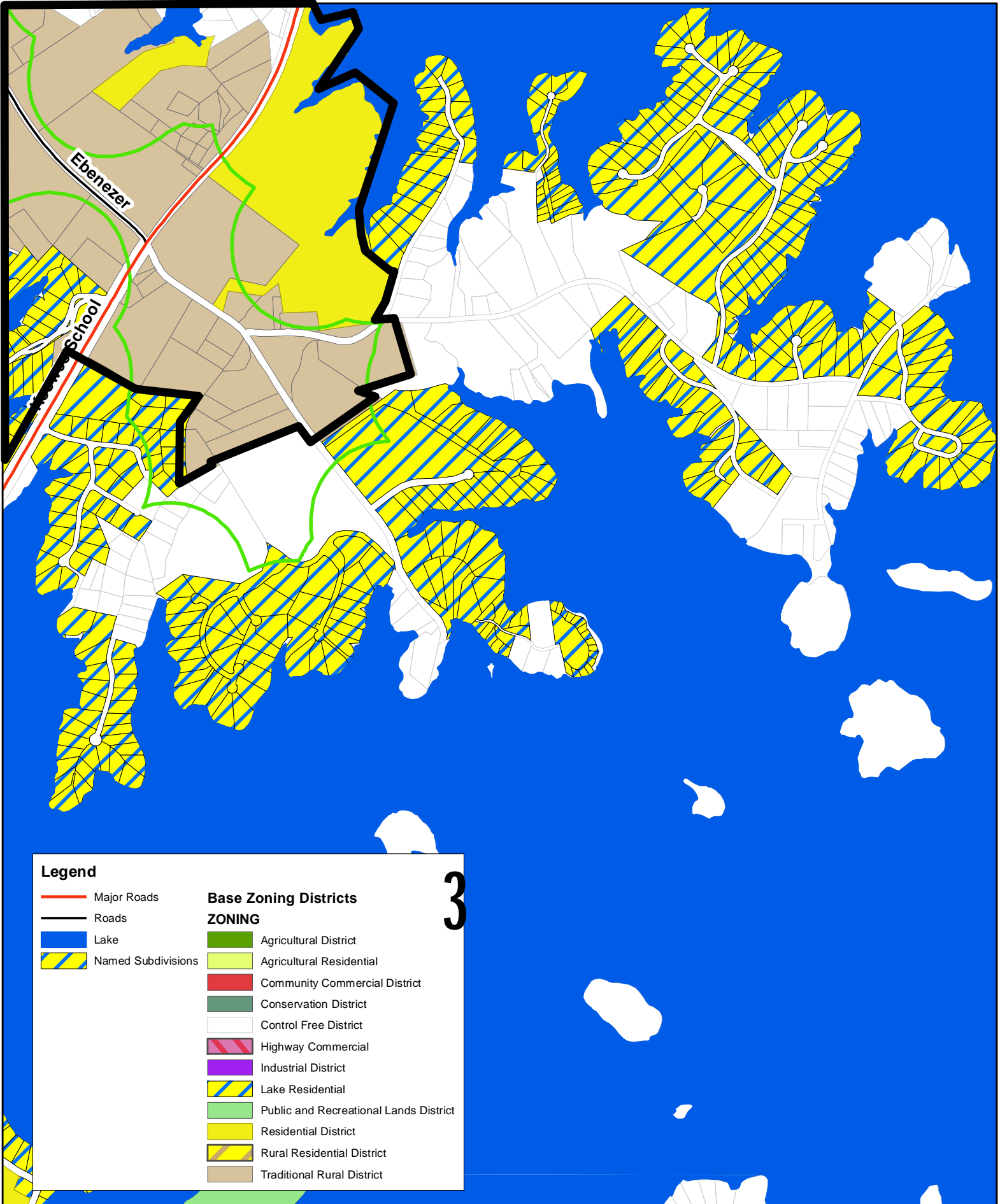
Staff Map for Consideration 2

Presented on 4-2-2012



Discussion and Consideration by Commission

Ordinance 2012-12
 Named Subdivisions as Lake Residential



Legend

- Major Roads
- Roads
- Lake
- Named Subdivisions

Base Zoning Districts

ZONING

- Agricultural District
- Agricultural Residential
- Community Commercial District
- Conservation District
- Control Free District
- Highway Commercial
- Industrial District
- Lake Residential
- Public and Recreational Lands District
- Residential District
- Rural Residential District
- Traditional Rural District

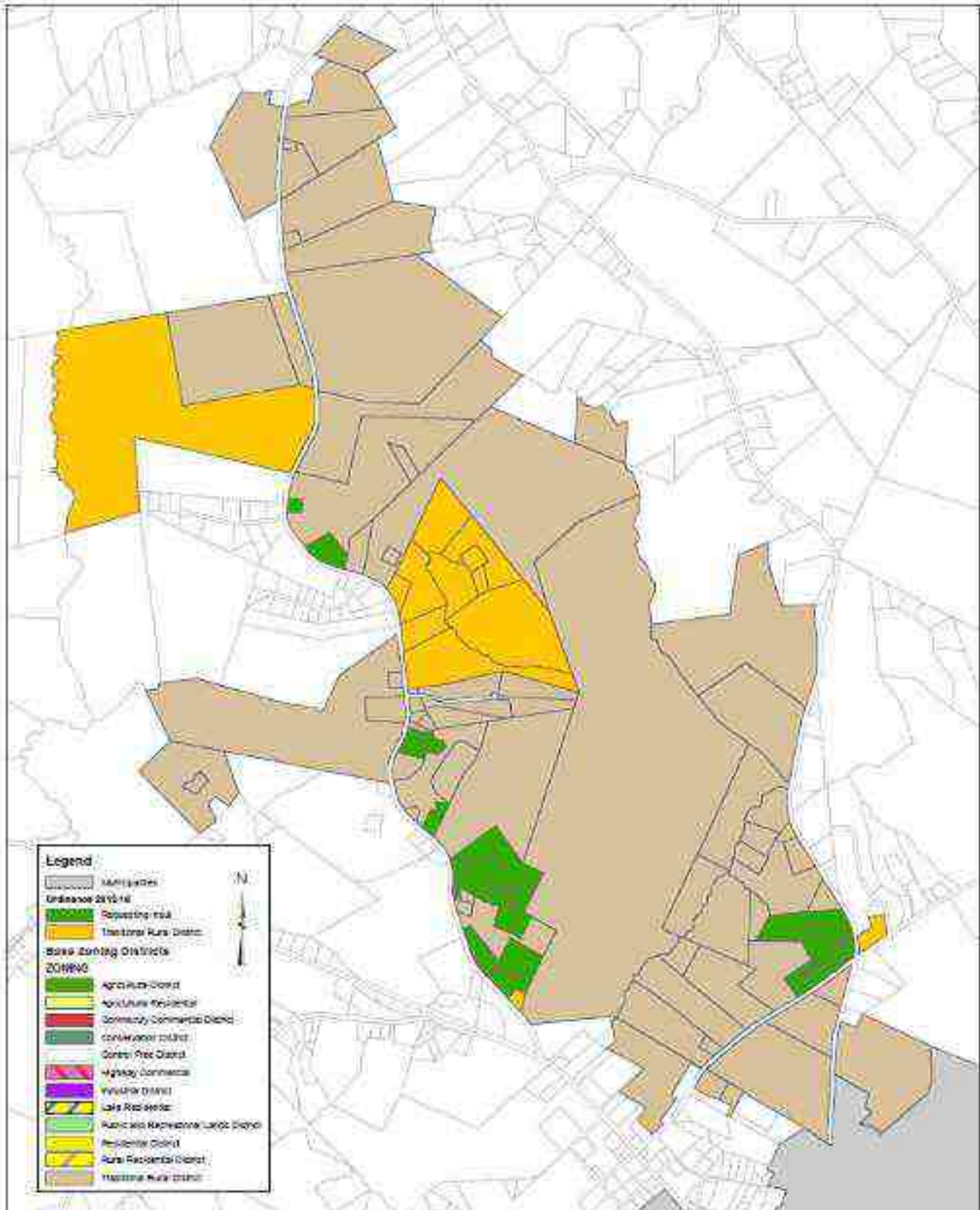
3

Ordinance 2012-16

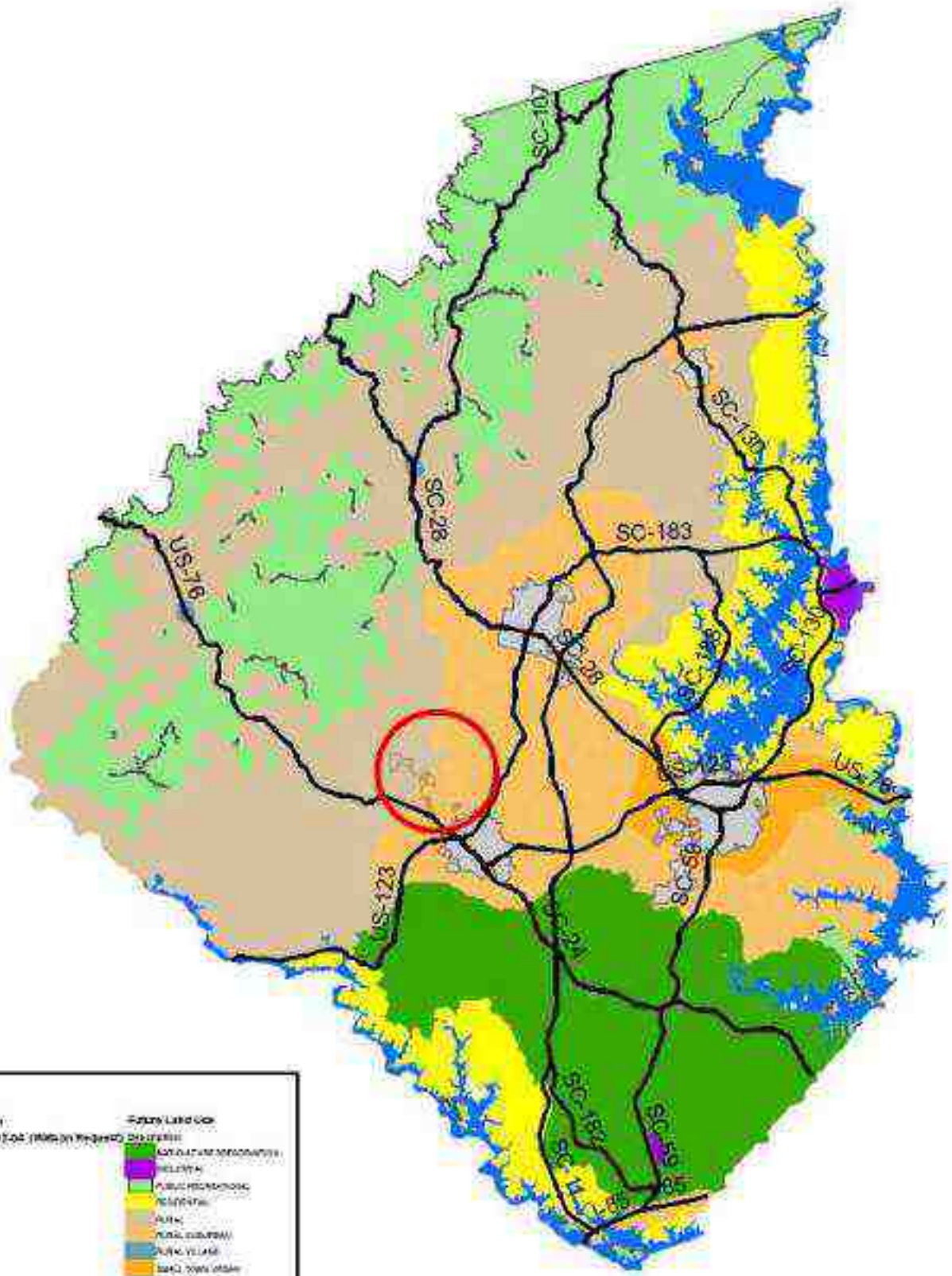
Watson II Rezoning Request

June 4, 2012
Planning Commission
Meeting

Area Map



Location on Future Land Use Map



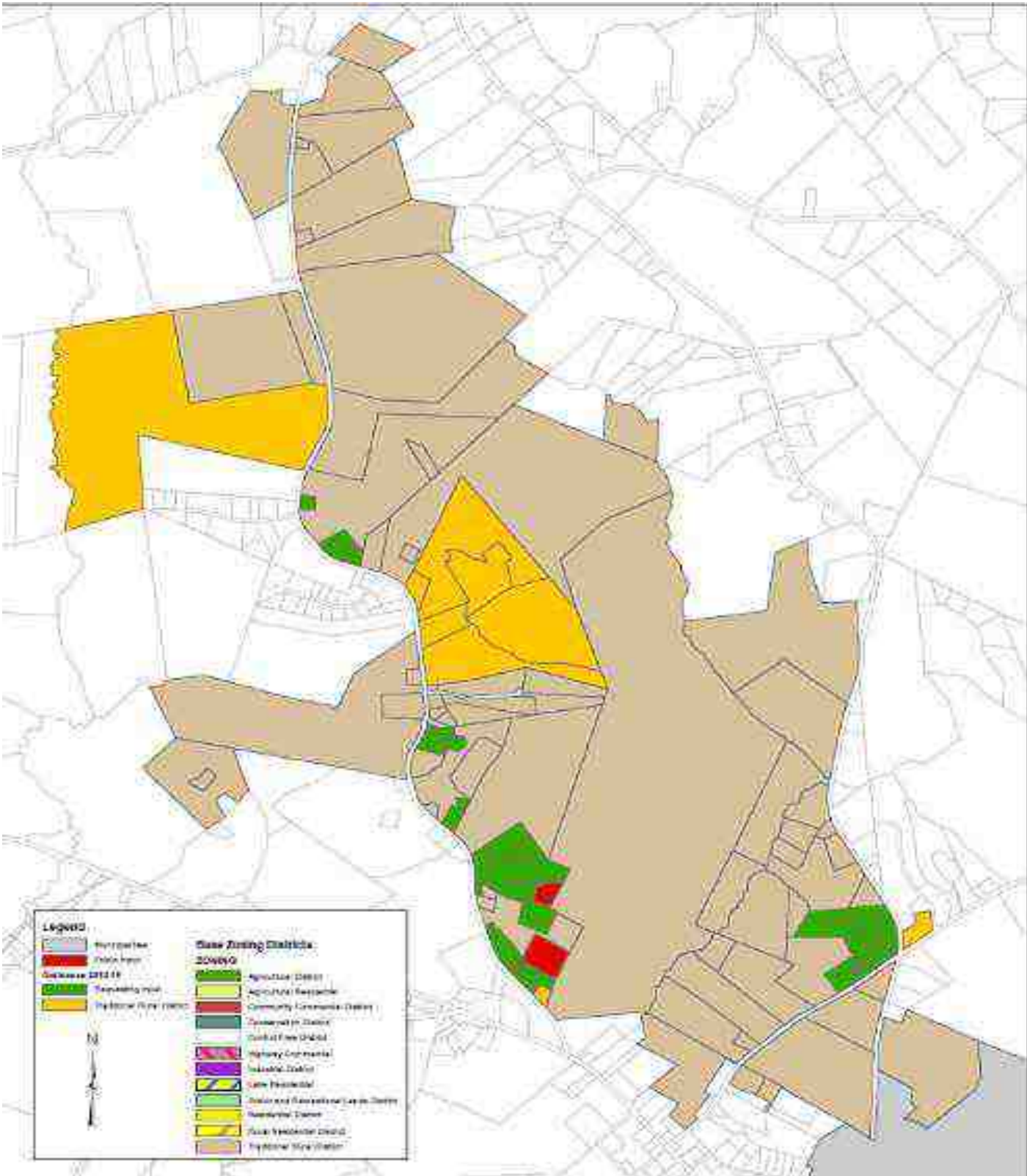
Legend

	Future Land Use
	AGRICULTURE
	RESIDENTIAL
	PUBLIC RECREATION
	INDUSTRIAL
	URBAN
	RURAL URBAN
	RURAL VILLAGE
	BARO TOWN CENTER

Public Input Received to Date

- We mailed 35 letters
- Received 2 back wanting TRD
- No negative post-cards were received

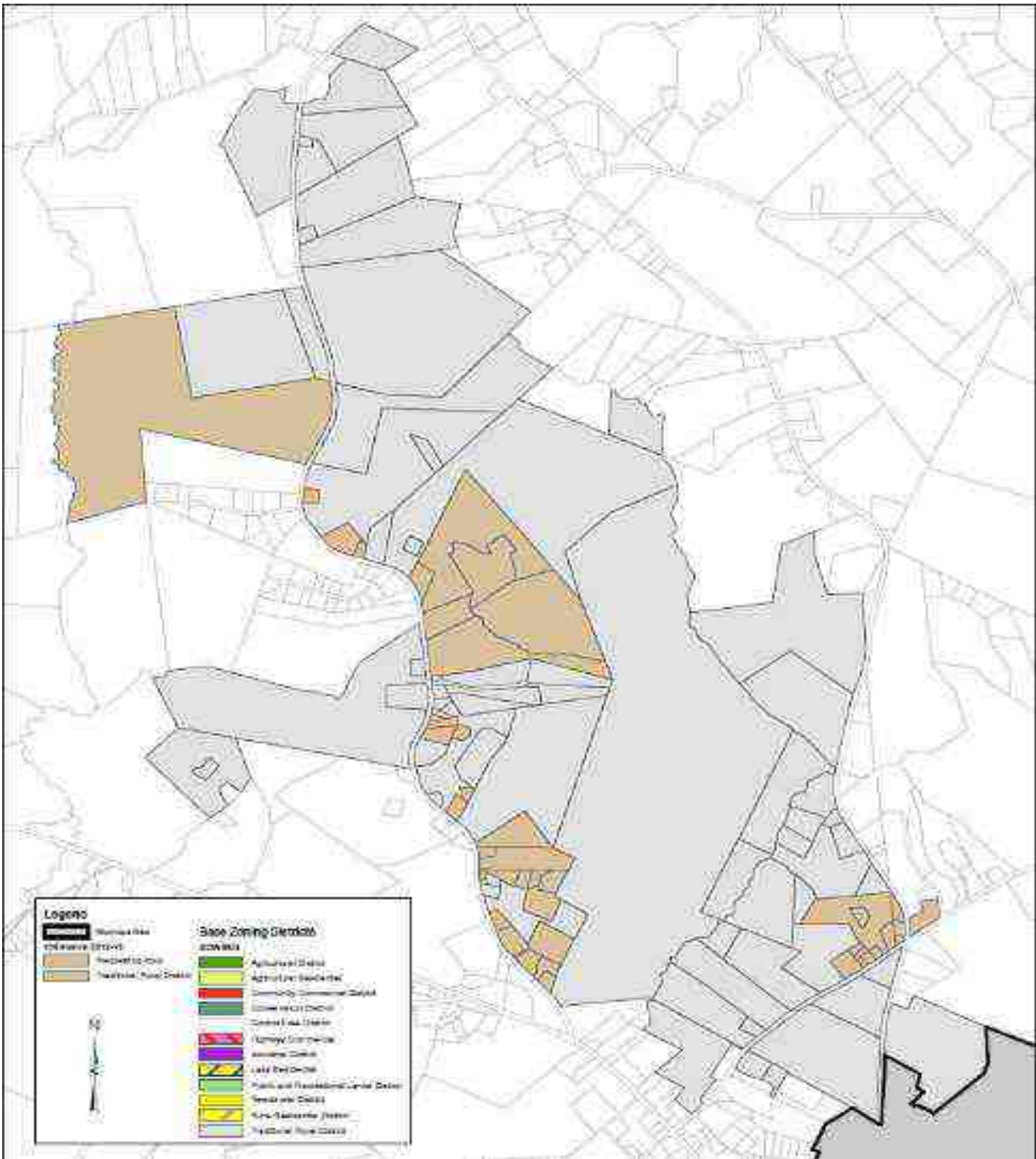
Map of Input Received



Staff Recommendation

- This rezoning request is located in the Rural and Rural Suburban area on the FLUM;
- The district requested complies with the Comprehensive Plan and with what Council has previously adopted in these area on the FLUM;
- The Commission should consider all public input received to date;
- Staff recommends TRD for all parcels under consideration
- With the consensus of the Commission staff will develop other alternatives for consideration.

Staff's Map for Consideration



Discussion and Consideration by Commission